



Using evidence within the local government context

Phillip Mind

LGA

17 July 2008

promoting better local government

- People, places and culture
- Cowes, Hay-on-Wye, Glastonbury
- Dungeness & Jarman, Hull & Larkin, Salford Boy's Club & Morrissey
- Archives – document and preserve these associations

The roles councils play

- The exercise of these functions is a statement about place
 - Conservation and heritage
 - New buildings
 - Libraries, archives and museums
 - Leisure, parks and recreation
 - Grants to theatres, festivals...
 - Partnerships with the private and third sector

The value created

- Intrinsic value – self expression, providing opportunities for fun and fulfilment and encouraging excellence
- Instrumental value – the contribution to economic vitality, educational attainment, health, safe and cohesive communities.

Both of value, linked by people taking part.

Taking Part Counts – evidence gap?

- Cultural sector – weakest in the Comprehensive Performance Assessment
 - Leicester City Council – Score 4 Sport in Braunstone – criminal offences dropped by 23%
 - South Gloucestershire Active for life – 14,000 people over 50 and between 15-19 years old 3 x 30 minutes
 - Interactive music reducing apathy in dementia patients (University of Southampton)

Using evidence in the local government context

- Where we were?
 - Plethora of indicators
 - Management information
 - Audit and inspection
 - Top down approaches
 - Multiple “initiatives and priorities”

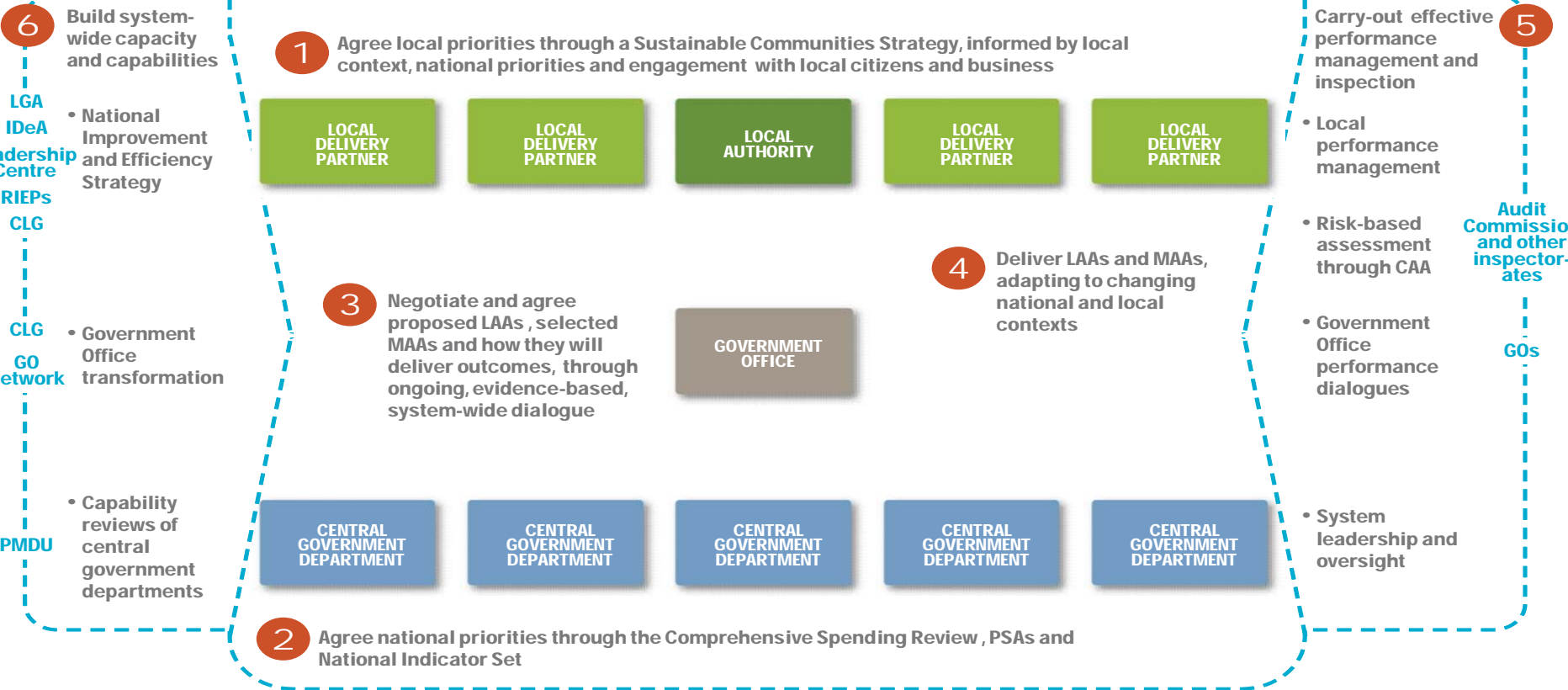
Using evidence in the local government context

The new regime

- Outcomes – local area agreements
- Focus on place
- Participation, partnership & co-production
- Sector led improvement
 - Resources devolved to the frontline
 - Simplified improvement
 - Stronger strategic planning

PRINCIPAL RELATIONSHIPS IN THE NEW LOCAL PERFORMANCE FRAMEWORK

OUTCOMES



the new local performance framework: delivering better outcomes for local people



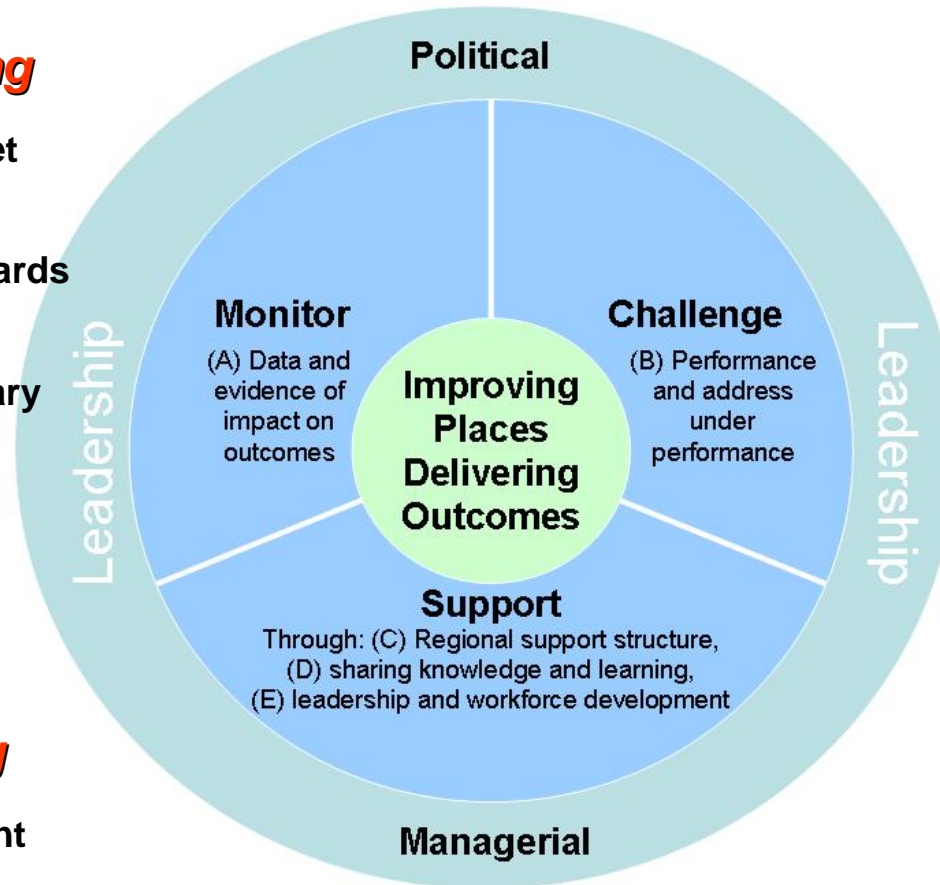
A passion for excellence

Monitoring

- National indicator set
- Voluntary business improvement standards and benchmarks
- National impact library

Supporting

- Regional improvement networks
- Knowledge & learning
- Workforce development
- Leadership development



Challenging

- Self assessment
- Peer led challenge
- Validation
- Peer review
- Facility accreditation

A passion for excellence

- Leadership development – National Cultural Forum
- Self assessment – improvement toolkit
- Improvement pilots
- Culture and Sport Strategic Reviews

Re-shaping places



Local Government Association

- Archives support the re-branding of places



Thank you for listening

Contact: philip.mind@lga.gov.uk